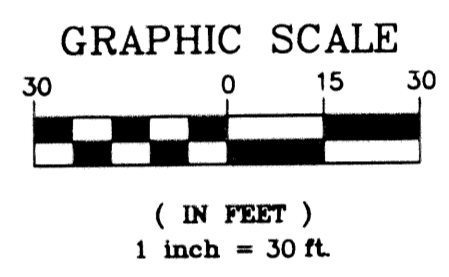
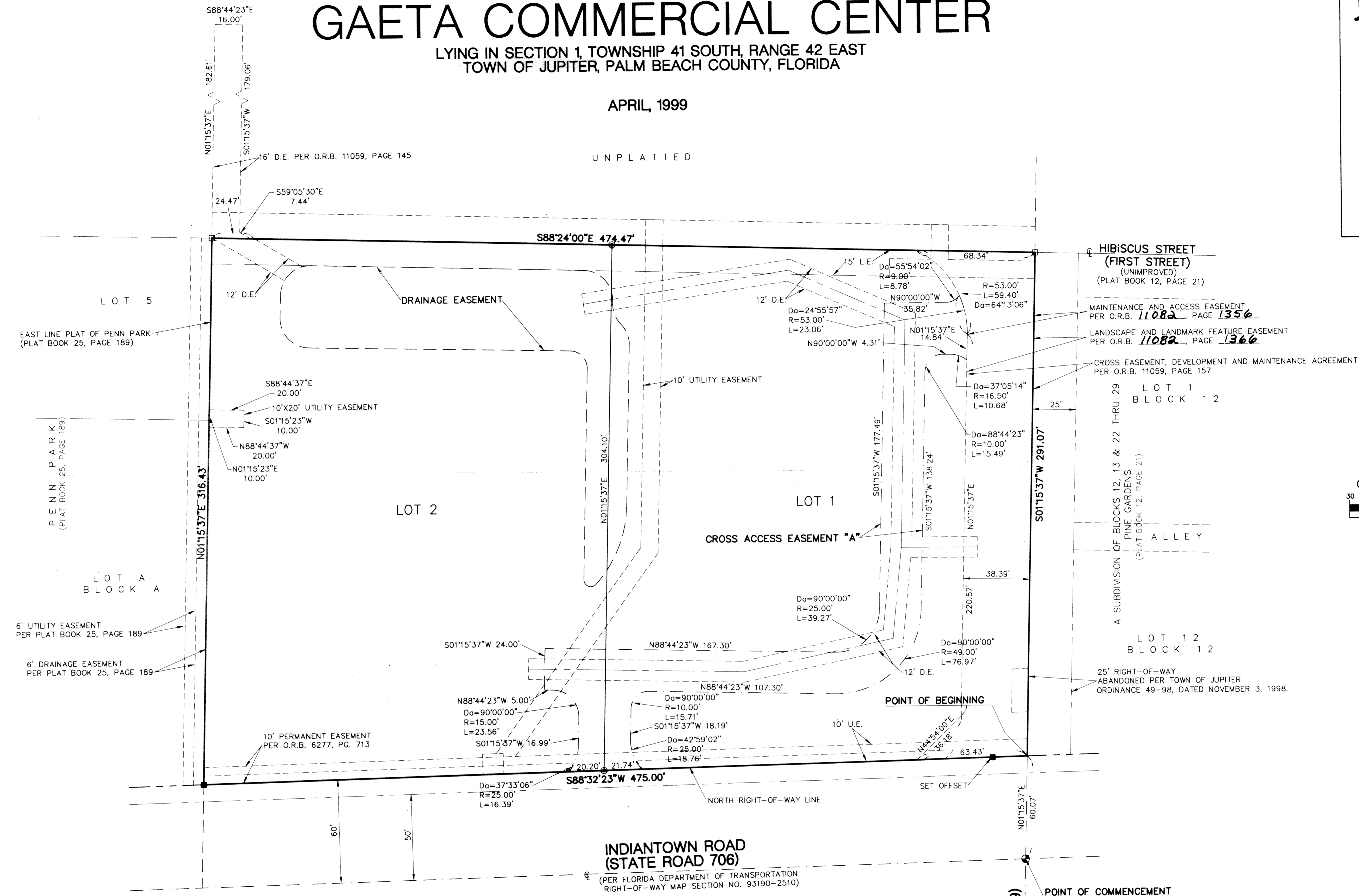


GAETA COMMERCIAL CENTER

LYING IN SECTION 1, TOWNSHIP 41 SOUTH, RANGE 42 EAST
TOWN OF JUPITER, PALM BEACH COUNTY, FLORIDA

APRIL, 1999

UNPLATTED



P:\97-0564\Survey\9755403.dwg Thu Apr 29 16:19:17 1999 LBFH, Inc.



LINDAHL, BROWNING, FERRARI, & HELLSTROM, INC.
CONSULTING ENGINEERS, SURVEYORS & MAPPERS
2090 PALM BEACH LAKES BLVD. 2550 S.W. CORPORATE PKWY 2222 COLONIAL ROAD 421 N.W. 3RD STREET
TOWER II, SUITE 600 PALM CITY, FL 34990 SUITE 201 OKEECHOBEE, FL 33974
WEST PALM BEACH, FL 33409 561-286-3883 FT. PIERCE, FL 34950 561-746-9248
561-684-3275 561-461-2450

3 3
Sheet of